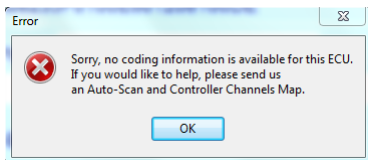


Adventures in VCDS.

Here are some things I have found that helped VCDS do what others seemed to make happen with ease. I have been using both the Release version and the Beta version.

Errors

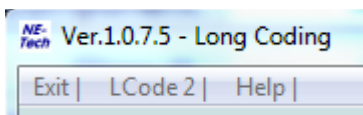
Sometimes this will appear.



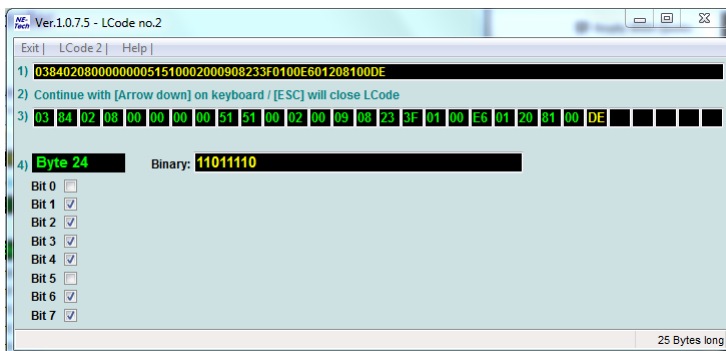
If it does then you may still be able to continue editing the bits.

After clicking OK, the coding window will appear but none of the check boxes for the bits appears.

In the top left of the window, click LCode2 and another coding window will appear.



The second coding window will let you tick or untick the bits.

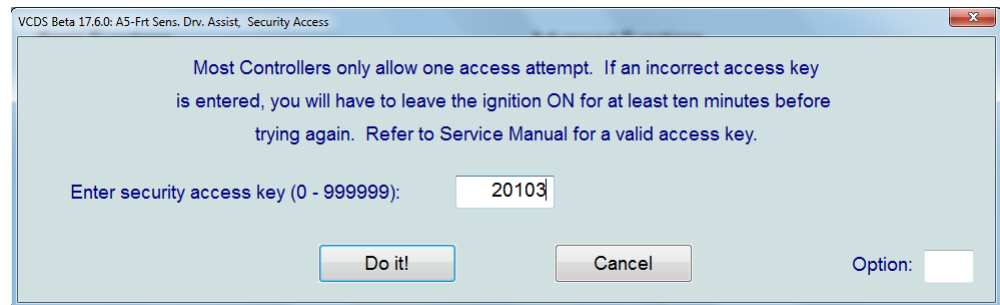


After doing this for the first time, VCDS seems to remember and each time after will show the editable window.

Controller A5 Front Sensor Driver Assist

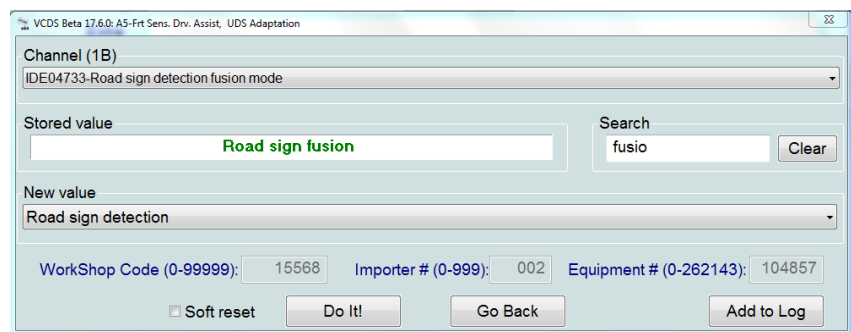
When making changes here for items such as Traffic Sign Recognition and High Beam Assist, a password is required. VCDS does not pre-fill this password as it does for other controllers.

The Security Access number for this controller is 20103.



Traffic sign recognition (on my controller) defaulted to Fusion mode. When in this mode the Maxidot constantly displayed the message that no sign data was available. Sign data from the GPS maps might only be available for larger city areas, and Fusion mode combines camera and map data to show signs.

To get the TSR to work, I switched the value "Road sign fusion" to "Road sign detection".



Hint: typing the first few letters of the item you are looking for in the search box will narrow down the options in the channel pull down menu.

There is an alert after the first sign is detected but it is not reported as an error. The alert states that the TSR is in restricted mode (my guess is the lack of maps data puts it in this mode).

Controller 09 Central Electrics

When making changes here for items such as High Beam Assist, the coding appears as all Zeros.

[illegible]

Attempting to use the Long Coding Helper results in a warning.

The screenshot shows the 'NCU Factory' application window. The title bar reads 'Ver.1.0.7.5 - SQO-937-084-CG | 30 Bytes long'. The menu bar includes 'Exit', 'LCode 2', and 'Help'. The main area contains four numbered instructions:

- 1) A row of 30 black boxes, each containing a white zero ('0').
- 2) Continue with [Arrow down] on keyboard / [ESC] will close LCode
- 3) A row of 30 black boxes, each containing a white zero ('0').
- 4) A green box labeled 'Byte 0' followed by the text 'Binary:' and another row of 30 black boxes, each containing a white zero ('0').

Below the instructions, there are two red text messages:

- 'Coding is NOT Supported by this Control Module Variant. Replacement Control Modules must be parameterized by using the Factory Tool and Software-Version-Management (SVM).'
- 'Many relevant Options (relating to Retrofits/Modifications) can be found by using the 'Adaptation' Function of the Control Module.'

The status bar at the bottom right indicates '30 Bytes long'.

It's time to enter the Security code (helpfully suggested by VCDS in a tool tip that pops up) and head to the Adaptions section.

I made three changes in Controller 09 (as well as the change that was recommended in Controller A5):

VCDS Beta 17.6.0: 09-Cent. Elect., UDS Adaptation

Channel (6B)
ENG141650-ENG141973-Fernlicht_assistent-Erweiterte_Fernlichtsteuerung

Stored value
AFS: FLA: BCM-Fernlicht

New value

Search
assist

Clear

WorkShop Code (0-99999): 33361 Importer # (0-999): 790 Equipment # (0-262143): 00063

☐ Soft reset Do It! Go Back Add to Log

VCDS Beta 17.6.0: 09-Cent. Elect., UDS Adaptation

Channel (9B)
IDE08786-ENG115723-Assistance light functions-Assistenzfahrlicht bei Regen

Stored value
active

Search
assist Clear

New value

WorkShop Code (0-99999): 33361 Importer # (0-999): 790 Equipment # (0-262143): 00063

☐ Soft reset Do It! Go Back Add to Log

VCDS Beta 17.6.0: 09-Cent. Elect., UDS Adaptation

Channel (6B)
ENG141650-ENG116641-Fernlicht_assistent-Menuesteuerung Fernlichtassistent Werkseinstellung

Stored value
present

Search
assist Clear

New value

WorkShop Code (0-99999): 33361 Importer # (0-999): 790 Equipment # (0-262143): 00063

☐ Soft reset Do It! Go Back Add to Log

After making these changes, remember to reset the Infotainment unit. While the Infotainment unit is on, press and hold the power button for a long time. The unit will, at first, switch off (perhaps back to the clock screen) then it will completely power down to a black screen. Release the power button, then press it once to turn it back on. New menu items will now be present.

